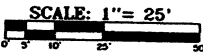


First Addendum To "Detail of Shoreline Area" Pinestone Crossing A Condominium

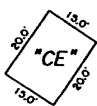
Town of Land o' Lakes
Vilas County, Wisconsin



Determined to Be
Vegetative Land
by Jane Wade of the DNR

Determined to Be
Wetland by Jane
Wade of the DNR
15,400± Sq.Ft.

Boat House
300 Sq.Ft.

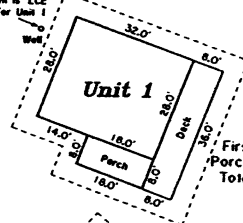


Primary and Alternate
Drainfield Areas
1,730 Sq.Ft.
"LCE" For Unit 1

Condominium Roadway

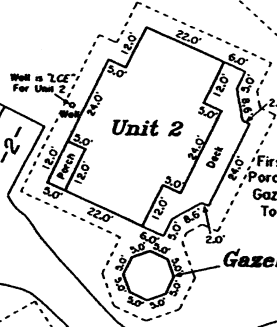
Gov't. Lot 2
Gov't. Lot 3

Well in "LCE"
For Unit 1



Unit 1
First Floor Area = 896 Sq.Ft.
Porch & Deck Areas = 432 Sq.Ft.
Total Unit Area = 1,328 Sq.Ft.
Three (3) Bedrooms

Primary and Alternate
Drainfield Areas
2,400 Sq.Ft.
"LCE" For Unit 2

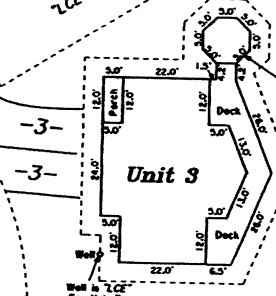


Unit 2
First Floor Area = 1,296 Sq.Ft.
Porch & Deck Areas = 431 Sq.Ft.
Gazebo Floor Area = 120 Sq.Ft.
Total Unit Area = 1,847 Sq.Ft.
Three (3) Bedrooms

Gazebo for Unit 2

Condominium Roadway

Primary and Alternate
Drainfield Areas
2,850 Sq.Ft.
"LCE" for Unit 3



Gazebo for Unit 3

Unit 3
First Floor Area = 1,356 Sq.Ft.
Porch & Deck Areas = 453 Sq.Ft.
Gazebo Floor Area = 120 Sq.Ft.
Total Unit Area = 1,929 Sq.Ft.
Three (3) Bedrooms

Landing Lake

-Owner's Certificate-
I, Bruce Moncrieff, owner of Pinestone Crossing, a Condominium, hereby certify that I have ordered this Condominium plot to be surveyed and divided into Units and mapped as shown on this Condominium plat and I certify that this plat is required to be reviewed and approved by Vilas County Planning and Zoning.
Witness his hand and seal,
Dated this _____ day of _____, 2006.

Bruce Moncrieff, President
Pinestone Crossing, LLC

State of Wisconsin) ss
County of _____)
Personally came before me this _____ day
of _____ 2006, the above named Bruce
Moncrieff to me known to be the person
who executed the foregoing and acknowledged
the same.

Notary Public, _____ County, WI.
My Commission _____

S 88°46'30" W 127.75'